



**MIDLAND
ALLOYS INC.**

The background of the entire page is a low-angle photograph looking up at large, curved industrial pipes. The pipes are metallic and have visible rivets or welds. The sky in the background is a mix of soft orange, pink, and blue, suggesting a sunset or sunrise. The overall tone is industrial yet serene.

**SHINE
ACROSS
THE WORLD**

ABOUT US

Vision

Our vision is simple though manifold

- Imaginatively designed solutions giving enhanced and increased options to our customers.
- Quality service which goes beyond just being a punch line.
- Building up on our experience, summing up our knowledge and leveling up to our customers expectations.

Mission

To serve our customers in a professional, ethical and transparent manner by incorporating and retaining value based systems in technology and human resources, with trustworthy expertise in Steel, Metal and related fields. We want to make it big by emphasizing on customer satisfaction factor. Our clients interests always come first. Our experience shows that if we serve our clients well, our own success will follow.



COMPANY PROFILE

Midland Alloys Inc. has established itself as one of the pre-eminent position in the steel segment in India and is on its way to become a major global player. We manufacture and export a wide variety of Steel and other Ferrous & Non-Ferrous metals in all forms.

Our all encompassing product range comprises of Stainless steel, Carbon steel, Alloy steel, Nickel & Nickel Alloys, Copper & Copper Alloys etc. These are manufactured in all possible dimensions and shapes like pipes, tubes, pipe fittings, flanges, Plate/Sheet, Bars, fasteners etc. To meet the exact requirements, we also offer them in different types, Grades, Sizes, schedules and classes.

We maintain a relentless pursuit of improvement in every critical performance measure and in this process, we have spread best practices and modern production techniques in all plants. We are committed to maintain world-class quality standards, efficient delivery schedules, competitive price and excellent after sales service.

In today's environment 'change' is a welcome phenomenon and Midland Alloys Inc. is geared to meet the challenging winds of change.

CORPORATE TEAM

Excellent reputations in the market, a respectful presence amongst competition, a loyalty commanding entity to its clients are not easy to attain, but we have attained it and sustained it for years. Our team is responsible for every bit of it.

Our manpower is a fair blend of experience, knowledge and imagination. They have impeccable skill-sets and project management ability.

The combined manpower of ten companies will fall short in front of this rare blend of competencies that our team exudes.

We are who we are, we walk the talk and it is nothing less than what our clients expect!





MANAGEMENT'S DESK

Over the years, we at Midland Alloys Inc. are proud of the generous support given by our clients, business associates, well-wishers, and a team of dedicated personnel, which has been a great asset and hope to continue as we all grow together from strength to strength.

The Company is proud of what has been done so far and is looking forward to new challenges and scaling new heights in future.

It is our corporate philosophy, to continuously steer ahead and strive to be the Market Leaders, with Strong emphasis for Environmental Safety, Quality & Commitment, to provide excellent, cost-effective services to our valued customers.

We, as a professional organization, strongly value Relationships and believe in building and maintaining long-lasting relationship with our Associates and Customers by providing total Commitment, ensuring common focus with extraordinary Drive. We have to make sure that we have the best human capital, which can consistently deliver higher efficiency at reduced costs.

ENVIRONMENT HEALTH & SAFETY



Our people are our strength.

Our success comes from our people.

We take our responsibilities in the area of health and safety very seriously.

We have in place a comprehensive company-wide Occupational Health and Safety Management System. Its purpose is to ensure the health and safety of our employees, customers, contractors, visitors and the public.

We are committed to our goal of ensuring zero harm to our employees, our contractors and the communities in which we operate.

Our policy principles include amongst other that all injuries and work-related illness can and must be prevented and that excellence in health and safety drives excellence in business results.

Besides the provision of adequate personal protective equipment, our focus also involves eliminating, reducing or isolating hazards wherever possible.



OUR INFRASTRUCTURE

We are operating a range of modern steel making technologies with latest computerized machineries. Our process and workforce together deliver consistent product quality that translates directly into increased productivity.

We are on the leading edge of technology with our in-house steel research center and have the most flexible facilities for producing the diversified product line in the steel industry. We work closely with our customers to develop innovative products and applications.

Quality Policy: Scope:

This quality assurance program gives the scope to manufacture The Pipes, Tubes, Pipe fittings (Butt Weld & Forged), Flanges, Fasteners (least interested product, so consider it at last), Sheets, Plates, Wires, Tube Fittings, Etc. as per the National, International specification & dimensional standards.

Quality System:

A system comprises the way of Quality Control to be followed during manufacturing process of Pipes, Tubes, Pipe fittings, Flanges, Fasteners, Sheets, Plates, Wires, Tube Fittings, Etc. so that an audit mechanism is introduced during manufacturing itself to produce a product meeting the requirements of desired codes & specifications.

Organisation

A separate quality control department is handled by a Q.C. engineer who maintains all the records & supervises the Q.C. Inspectors.

Processing System

At the raw material stage the same is checked visually for any kind of surface defects such as cracks, seams, overlapping, pitting, as well as dimensionally. A chemical & physical test is carried out before selecting the Raw material. After acceptance of raw material a control number is issued and this is punched/marked on whole of the Raw material is to be use.

In Manufacturing Of Fittings, Flanges, etc. At the time of cutting, The control number is transferred on each cut pieces and the same is transferred after every operation of forging or forming in case of Invisibility of the same. After each forging or Forming process the material is checked visually for surface crack.

Here treatment is carried out after final forging or forming as required by the code. After final forging or heat treatment a batch number is assigned to a lot and this batch number is stamped on each Pipes, Tubes, fittings, Flanges, Etc. and on the temperature chart which is automatically generated by temp. recorder coupled with the heating furnace. Time of final forging/forming & date is also mentioned on the chart.

Machining

After final forging/forming and Heat treatment process, all the pipe Fittings, Flanges, Fasteners, Etc. are sent for machining i.e. and preparation, O/D and I/D matching as per dimensional codes. An Expert Q.C. engineer is involved and he keeps constant vigil on every machining operation. Step machining is carried out as required by the codes. GO and NO-GO gauges are used to check the O/D & I/D of the fittings, Flanges, etc.

Testing

Tensile test is done on a sample taken from mother Raw material or from the lots of Pipes, Tubes, Fittings, Flanges, Fasteners, Etc. in accordance with codes as required by purchaser on universal testing machine which is calibrated & approved by the authorized inspection agencies.

Hardness testing is done on Atleast 10% of each lot & results are recorded in separate register. Impact test is carried out on low temperature fittings covered by specification ASTM A420 WPL grades.

100% X-Ray examination is carried out on all Welded Pipes, Tubes, Fittings.

Finishing

All the Pipes, Tubes, fittings, Etc. are pickled and passivated. By pickling all the scale is removed which is formed during forging/ Forming operations. After pickling , Grinding operation is done to remove the die mark and inside / outside burrs formed during forming & machining operation. Dimensional check is carried out finally & recorded.

Marking

After the final dimensional check each fittings is stamped /marked for size, schedule, Fittings specification, Heat mark & batch number.

Certificate

All the fittings supplied to the purchaser to the purchaser are furnished with Manufacturer's test certificate. This certificate contains data i.e. Raw material composition, Heat treatment done, Heat Mark, Batch Number, Hardness value, Chemical & physical test results, Radiography results (If carried Out) , size, schedule, specification and quantity supplied.

INDUSTRIES SERVED



Petroleum
Refineries



Electric
Power Plants



Food Processing
Plants



Nuclear
Industries



Pharmaceutical
Plants



Ship
Building



Offshore
Industry



Sewage
Treatment



Paper
Mills



Textile
Industry



Machinery
Fabrication



Chemical
Industry



Dairy Plant



TECHNOLOGY



PRODUCTION FACILITIES

A manufacturing company's strength lies not only in its tools, but also in the minds that stand a class apart and control them. Midland Alloys Inc. India has laid a strong and well-planned manufacturing foundation at Mumbai. Spread over an expansive 1.25 lakh sq. feet, housing more than 800 dynamic employees.

With the entire production process under one-roof, the added costs of transportation and manpower is reduced to the minimal. This reflects in the cost effective products and services that Midland Alloys Inc. provides to its customers.

The company has the production capacity of over 1000 tons per month, which is, THE largest in INDIA today! Being a single point manufacturing unit proves to be a major positive factor for the clients. The manufacturing process houses, the finest machinery that provides for a technologically sound production unit. From Raw Material to Finished Products, all the procedures are undertaken with precision. The stages of production include Designing, Tooling/Dye Making, Blanking or Circle Cutting, Pressing/ Deep Drawing or Forming, Rolling & Spinning/Extrusion, Annealing or Stress Relieving, Ribbing / Fitting and Buffing.

HEAT TREATMENTS

Heat Treatment is the controlled heating and cooling of metals to alter their physical and mechanical properties without changing the product shape. Heat treatment is sometimes done inadvertently due to manufacturing processes that either heat or cool the metal such as welding or forming.

Heat Treatment is often associated with increasing the strength of material, but it can also be used to alter certain manufacturability objectives such as improve machining, improve formability, restore ductility after a cold working operation. Steels are heat treated for one of the following reasons:

Softening • Hardening • Material Modification

PACKAGING

Good packaging reflects the conditions in which a product will be sold, that in turn, reflects the customers' purchasing and usage of the product.

Since customer satisfaction is our topmost priority, we make sure to build on reliability and competency through offering them packaging services. Cost effective techniques and profitability is what we aim to achieve. garnering an edge over our competitors.

PRODUCTS



PIPES



We at Midland Alloys Inc. are Manufacturer and Exporter of industrial pipes & tubes and industrial steel pipes. We offer a huge array of steel pipes that are fabricated by using various grades of material steel and metal alloys. These are available in single welded or double welded form. Our clients have the option to choose pipes with radiography or without radiography.

Stainless steel seamless & ERW pipes are fabricated in different alloys of ASTM / ASME SA 312 GR. TP 304 , 304L , 304H, 309S, 309H , 310S, 310H , 316 , 316L, 316H , 316Ti , 317 , 317L , 321 , 321H , 347 , 347 H , 904L ASTM / ASME SA 358 CL 1 & CL 3 GR . 304 , 304L , 304H, 309S ,309H , 310S, 316 , 316H , 321 , 321H , 347 and others. Our comprehensive range includes welded stainless steel pipes, seamless alloy steel pipes, welded steel pipes and many more. We produce using ace quality of steel and alloy to retain their durability for longer period.

RANGE	15 NB UP TO 600 NB IN SCH 5S , 10S ,10 , 20 , 40S , 40 , STD , 60 , 80S , 80 , XS , 100 , 120 , 140 , 160 & XXS
TYPE	SEAMLESS / ERW / WELDED/ FABRICATED / LSAW PIPES
FORM	ROUND, SQUARE, RECTANGULAR, HYDRAULIC, ETC.
LENGTH	SINGLE RANDOM, DOUBLE RANDOM & CUT LENGTH
END	PLAIN END, BEVELLED END, TREADED
COATING ON PIPE	<ul style="list-style-type: none">• EPOXY• FUSION BONDED EPOXY COATING – FBE COATING• THREE LAYER POLYETHYLENE COATING – 3LPE COATING• THREE LAYER POLYPROPELENE COATING – 3LPP COATING• COALTAR ENAMEL COATING – CTE COATING• CEMENT MORTAR LINING COATING• CONCRETE WEIGHT COATING
VALUE ADDED SERVICES	<ul style="list-style-type: none">• HOT DIP GALVANIZING• ELECTRO POLISH• DRAW & EXPANSION

STAINLESS & DUPLEX STEEL PIPES

Our range of stainless steel pipes, ERW stainless steel pipes and duplex steel pipes are offered as per the standard dimensions and the international quality and safety standards. These pipes are highly durable, reliable, corrosion resistant and possess high strength.

Stainless Steel Pipes

Standard	ASTM / ASME SA 312 / SA 358 CL 1 & CL 3
Grade	304 , 304L , 304H, 309S ,309H , 310S, 310H , 316 , 316L, 316H , 316Ti , 317 , 317L , 321 , 321H , 347 , 347 H , 904L.

Duplex Steel Pipes / Super Duplex Pipes

Standard	ASTM / ASME SA 790
Grade	UNS NO S 31803 , S 32205

Carbon & Alloy Steel Pipes

Presenting an extensive array of seamless carbon steel pipes, mild steel pipes and alloy steel pipes that finds their application in diverse industries like construction, engineering, oil etc. These precision engineered pipes are known for their sturdy construction and long lasting metal.

Carbon Steel Pipe / LSAW Pipes

ASTM / ASME A 53GR. A & B, ASTM A 106 GR. A , B & C. API 5L GR. B , API 5L X 42 , API 5L Grade B

Low Temperature Carbon Steel Pipe

ASTM A333 GR.6

Alloy Steel Pipe

Standard	ASTM / ASME A 335
Grade	Gr P 1 , P 5 , P 9 , P 11 , P 12 , P 22 , P 23 , P 91

Mild Steel Pipe & Galvanized (GI) Pipe

IS 1239 / IS 3589 (FE 330 / FE 410)

Coating On Pipe

Fusion Bonded Epoxy Coating – FBE Coating

Fusion Bonded Epoxy Coating – FBE Coating

Three Layer Polypropylene Coating – 3LPP Coating

Coal Tar Enamel Coating – CTE Coating

Cement Mortar Lining Coating

Concrete Weight Coating Coating for large Onshore and Offshore Projects with qualitatively and timely Delivery With International Technical Specifications.

Nickel Alloy & Copper Alloy Pipes

We use state-of-the-art infrastructure and finest quality of raw materials for manufacturing nickel alloy pipes and copper alloy pipes in various shapes like round, square, rectangle etc. Manufactured as per the standard dimensions, these highly durable pipes with temperature and pressure resistance can be customized as per the requirement of the client.

Nickel Alloy

ASTM / ASME SB 161 UNS 2200 (NICKEL 200)

ASTM / ASME SB 161 UNS 2201 (NICKEL 201)

ASTM / ASME SB 165 UNS 4400 (MONEL 400)

ASTM / ASME SB 464 UNS 8020 (ALLOY 20 / 20 CB 3)

ASTM / ASME SB 423 UNS 8825 INCONEL (825)

ASTM / ASME SB 167 / 517 UNS 6600 (INCONEL 600)

ASTM / ASME SB 167 UNS 6601 (INCONEL 601)

ASTM / ASME SB 444 / UNS 6625 (INCONEL 625)

ASTM / ASME SB 622/619/626 UNS 10276 (HASTELLOY C 276)

Copper Alloy

ASTM / ASME SB 111 UNS NO. C 10100 , 10200 , 10300 , 10800 , 12000,12200, 70600 , 71500 . 71640

ASTM / ASME SB 466 UNS NO. C 70600 (CU -NI- 90/10) , C 71500 (CU -NI- 70/30)

TUBES



We Manufacture, design and supply high quality round steel tubes for various industrial applications. The strength & durability of our steel tubes is ensured by stringent production and quality control measures that we adopt at our manufacturing plant. Available in a variety of sizes and specifications, our products match the global quality standards.

We have a wide range of tubes such as stainless steel seamless tubes, stainless steel welded tubes, steel seamless tubes, steel welded tubes and many more.

RANGE	SEAMLESS / ERW / WELDED/ CDW
TYPE	SEAMLESS / ERW / WELDED/ FABRICATED / LSAW PIPES
FORM	ROUND, SQUARE, RECTANGULAR, COIL, 'U' SHAP, PAN CAKE
OTHER	<ul style="list-style-type: none">• HYDRAULIC TUBE• HORN TUBE• CAPILLARY TUBE• BOILER TUBE• PRECISION TUBE• IBR TUBE
LENGTH	SINGLE RANDOM, DOUBLE RANDOM & REQUIRED LENGTH
END	PLAIN END, BEVELLED END, TREADED
VALUE ADDED SERVICES	<ul style="list-style-type: none">• HOT DIPPED GALVANIZING• EPOXY & FBE COATING• ELECTRO POLISH• DRAW & EXPANSION• BENDING• BUFFING

Stainless Steel Tubes

Our wide gamut of stainless steel tubes can be supplied in different dimensional specifications provided by the clients. These tubes have high tensile strength and anti-corrosive properties that makes them durable.

Stainless Steel Pipes

Standard	ASTM / ASME SA 790
Grade	UNS NO S 31803 , S 32205

Carbon & Alloy Steel Tubes

Constructed using the finest quality of raw materials, our range of Carbon & Alloy Steel Tubes ensures long lasting quality. These tubes can be customized as per the need of the client and are available in different grades at pocket-friendly prices.

Carbon Steel Tubes

ASTM / SA 179 / A 210 GR.A / BS 3059 GR.360 & 440

Alloy Steel Tubes

Standard	ASTM / ASME A/SA 213
Grade	T9, T11, T12, T22, T91

Coating on Tube

Fusion Bonded Epoxy Coating – FBE Coating

Three Layer Polyethylene Coating – 3LPE Coating

Three Layer Polypropylene Coating – 3LPP Coating

Coal Tar Enamel Coating – CTE Coating

Cement Mortar Lining Coating

Concrete Weight Coating Coating for large Onshore and Offshore Projects with qualitatively and timely Delivery with International Technical Specifications.

Nickel Alloy & Copper Alloy Tubes

Constructed using the finest quality of raw materials, our range of nickel and copper alloy tubes ensures long lasting quality. These tubes can be customized as per the need of the client and are available in different grades at pocket-friendly prices.

Nickel Alloy Tubes

Standard	ASTM / ASME SB 163 / 165 / 167 / 464/ 517 / 619 / 622 / 626 / 704 / 705.
Grade	UNS 2200 (NICKEL 200), UNS 2201 (NICKEL 201), UNS 4400 (MONEL 400), UNS 8020 (ALLOY 20 / 20 CB 3), UNS 8825 INCONEL (825), UNS 6600 (INCONEL 600), UNS 6601 (INCONEL 601), UNS 6625 (INCONEL 625), UNS 10276 (HASTELLOY C276)

Copper Alloy Tubes

COPPER TUBE	ELECTROLYTIC / DIOXIDE
COPPER NICKEL TUBE / CUPRO NICKEL TUBE	ASTM / ASME SB 111 UNS NO. C 70600 (CU -NI- 90/10) / C 71500 (CU -NI- 70/30) / C 71640 (CU -NI-66/30/2/2)
ADMIRALTY BRASS TUBE	ASTM / ASME SB 111 UNS NO. C 44300 (ALLOY 443)
ALUMINIUM BRASS TUBE	ASTM / ASME SB 111 UNS NO. C 68700 (ALLOY 687)

BUTTWELD FITTINGS



We are the Manufacturer of butt weld fittings and prepare them in various designs as per the specifications of our clients. Manufactured using quality material and sophisticated machines, our range of butt weld fittings is known for its high quality, zero-defects and superior performance.

We offer these fittings in various shapes such as elbow, tee, reducer, return bends, stub-ends, cap, collar, cross, insert and more.

RANGE	1/8"NB TO 48"NB IN SCH: 5S, 10S, 40S, 80S, 10, 20, 40, STD, 60, 80, XS, 100, 120, 140, 160, XXS AVAILABLE WITH NACE MR 01-75
TYPE	SEAMLESS / WELDED/ FABRICATED
LONG RADIUS BEND	LONG RADIUS BEND, PIGGABLE BEND, INDUCTION BEND WITH RADIUS R=3D, 5D, 6D, 8D, 10D & 20D.
FORM	<ul style="list-style-type: none"> • ELBOWS IN LONG & SHORT RADIUS IN 45 DEG, 90 DEG, 180 DEG. • EQUAL, UNEQUAL TEE & BARRED TEE. • ECCENTRIC REDUCER & CONCENTRIC REDUCER. • CAPS & CROSSES. • LONG & SHORT STUB END. • SWAGE NIPPLE & BARREL NIPPLE.
OTHER	<ul style="list-style-type: none"> • DAIRY FITTINGS • CUSTOMISED FITTINGS
VALUE ADDED SERVICES	<ul style="list-style-type: none"> • HOT DIPPED GALVANIZING • EPOXY & FBE COATING • ELECTRO POLISH

Stainless Steel Butt Weld Fittings

We offer premium quality of stainless steel butt weld fittings and duplex steel butt weld fittings which are made with premium quality of steel. These precision engineered fittings are mainly used in underground and concealed fittings.

Stainless Steel Butt Weld Fittings

Standard	ASTM / ASME A/SA 403 GR WP "S" / "W" / " WX"
Grade	304, 304L, 304H, 309S, 309H, 310S, 310H, 316, 316TI, 316H, 316L, 316LN, 317, 317L, 321, 321H, 347, 347H, 904L

Duplex Steel Butt Weld Fittings

Standard	ASTM / ASME SA 815
Grade	UNS NO.S 31803, S 32205

Carbon Steel & Alloy Steel Butt Weld Fittings

Made as per international quality and safety standards, we offer precision engineered carbon steel butt weld fittings. These high quality fittings give excellent performance and are available at highly competitive prices.

Carbon Steel Butt Weld Fittings

Standard	ASTM A 234 WPB /MSS-SP-75
Grade	WPBW, WPHY 42, WPHY 46, WPHY 52, WPH 60, WPHY 65 & WPHY 70.

Low Temperature Carbon Steel Pipe

Standard	A420 WPL3/A420 WPL6
----------	---------------------

Alloy Steel Butt Weld Fittings

Standard	ASTM / ASME A/SA 234
Grade	WP 1, WP 5, WP 9, WP 11, WP 12, WP 22, WP 23, WP 91.

Nickel Alloy Butt Weld Fittings

We offer nickel alloy butt weld fittings in different grades and as per international quality and safety standards. These butt weld fittings are durable, corrosion resistant and can be customized as per the requirement of the client

Nickel Alloy Butt Weld Fittings

Standard	ASTM / ASME SB 336.
Grade	UNS 2200 (NICKEL 200), UNS 2201 (NICKEL 201), UNS 4400 (MONEL 400), UNS 8020 (ALLOY 20 / 20) CB 3, UNS 8825 INCONEL (825), UNS 6600 (INCONEL 600), UNS 6601 (INCONEL 601), UNS 6625 (INCONEL 625), UNS 10276 (HASTELLOY C 276)

FORGED FITTINGS & OUTLET

We manufacture and export stainless steel and our range includes 15 NB to 100 NB in 3000 LBS, 6000 LBS, 9000 LBS available with NACE MR 01-75. High quality forged fittings & outlets in different sizes and specifications

with wide range. We have earned a remarkable position in the market because of our impeccable quality forged fittings. Developed keeping the various requirements of our customers and market standards in consideration, our products are known for their high performance, durability and variety of designs and specifications. We can manufacture fittings as per drawings.



RANGE	FORGED FITTINGS 15 NB TO 100 NB IN 3000 LBS, 6000 LBS, 9000 LBS AVAILABLE WITH NACE MR 01-75.	
	OUTLET'S ¼" TO 24" IN 3000 LBS, 6000 LBS, 9000 LBS AVAILABLE WITH NACE MR 01-75.	
TYPE	SOCKET WELD (S/W) & SCREWED (SCRD)	
LONG RADIUS BEND	LONG RADIUS BEND, PIGGABLE BEND, INDUCTION BEND WITH RADIUS R=3D, 5D, 6D, 8D, 10D & 20D.	
FORM	<ul style="list-style-type: none"> • ELBOW 45 DEG & 90 DEGREE • UNION • CROSS • SWAGE NIPPLE 	<ul style="list-style-type: none"> • TEE • FULL & HALF COUPLING • CAP • PLUG- BUSH
OUTLET'S	<ul style="list-style-type: none"> • WELDOLET • ELBOWLET • NIPOLET • SWEPOLET 	<ul style="list-style-type: none"> • SOCKOLET • THREDOLET • LETROLET
OTHER	<ul style="list-style-type: none"> • HYDRAULIC FITTINGS • INSTRUMENTATION FITTINGS 	
VALUE ADDED SERVICES	<ul style="list-style-type: none"> • HOT DIP GALVANIZING • SAND BLASTING 	

Carbon & Alloy Steel Forged Fittings & Outlets

These high pressure pipe fittings like threaded/socket elbow, steel forged pipe fittings, hydraulic pipe fittings, threaded/socket tee fittings etc. are offered as per the standard specifications. Available at highly competitive prices, these fitting sand outlets can be customized as per the requirement of the client.

Stainless Steel Forged Fitting

Stainless Steel Outlets	
Standard	ASTM / ASME A/SA 182
Grade	F 304, 304L, 304H, 309S, 309H, 310S, 310H, 316, 316TI, 316H, 316L, 316LN, 317, 317L, 321, 321H, 347, 347H, 904L.

Duplex Steel Outlets & Super Duplex Outlets

Duplex Steel Outlets & Super Duplex Outlets	
Standard	ASTM / ASME A/SA 182
Grade	F 44, F 45, F51, F 53, F 55, F 60, F 61.

Nickel & Copper Alloy Forged Fittings & Outlets

We offer a variety of premium quality forged carbon steel fittings & alloy steel forged fittings and outlets which are durable and reliable in nature. These fittings and outlets find their application in various industries and areas.

Carbon Steel Forged Fittings

Carbon Steel Outlets	
Standard	ASTMA 105/A694/ A350 LF3/A350 LF2.
Grade	F42/46/52/56/60/65/70

Alloy Steel Forged Fittings

Alloy Steel Outlets	
Standard	ASTM A182
Grade	F1/F5/F9/F11/F22/F91

Nickel & Copper Alloy Forged Fittings & Outlets

Our superior range of nickel alloy pipe fittings & copper alloy pipe fittings and outlets is offered in different specifications and at highly competitive prices. These are widely used in different areas and industries. Customization is done as per the specification and requirement of the customer.

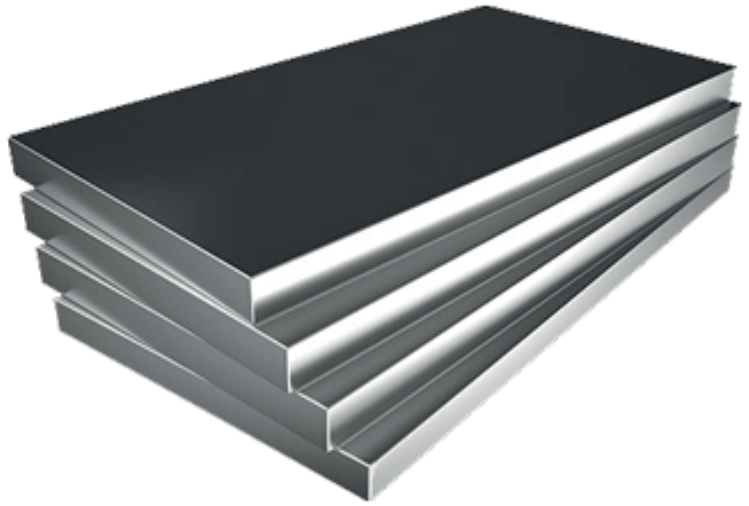
Nickel Alloy Forged Fitting

Nickel Alloy Outlets	
Standard	ASTM / ASME SB 564 / 160 / 472
Grade	UNS 2200 (NICKEL 200), UNS 4400 (MONEL 400), UNS 8825 INCONEL (825), UNS 6600(INCONEL 600), UNS 6601 (INCONEL 601), UNS 6625 (INCONEL 625), UNS 10276 (HASTELLOY C 276), UNS 2201 (NICKEL 201), (ALLOY 20 / 20 CB 3)

Copper Alloy Forged Fittings & Outlets

Standard	ASTM / ASME SB 61 / 62 / 151 / 152.
Grade	UNS NO. C 92200, UNS NO. C 83600, UNS NO. 70600, 71500, C 70600 (CU -NI- 90/10), C 71500 (CU -NI- 70/30), UNS NO C 10100, C 10200, C 10300, C 10800, C 12000, C 12200

SHEETS & PLATES



Our Plates, sheets and coils are made of Stainless Steel, Nickel Alloys, Carbon Steel, Alloy Steel, and Other Ferrous & Non-Ferrous Metals. They are used in a range of applications like structural and mechanical & general engineering purposes. They are designed to withstand tremendous amount of weights and pressure. Our plates, sheets and coils are testimonials of our quality standards.

Our comprehensive range includes alloy steel coil, carbon steel coil and many more. The standard sizes range from 0.5 mm To 200 mm thick in 1000 mm TO 2500 mm width & 2500 mm to 12500 mm Length available with NACE MR 01-75.

RANGE	0.5 MM TO 200 MM THICK IN 1000 MM TO 2500 MM WIDTH & 2500 MM TO 12500 MM LENGTH AVAILABLE WITH NACE MR 01-75.
OTHER MATERIALS	SOCKET WELD (S/W) & SCREWED (SCRD)
LONG RADIUS BEND	<ul style="list-style-type: none"> • COPPER • BRASS • ALUMINUM • LEAD • PHOSPHORUS BRONZE • BRELLIUM COPPER • HIGH SPEED STEEL • HCHCR
TYPES	SHEET, PLATES, COILS, FLAT, STRIPS, PROFILE, BLANK, CIRCLE, RING ETC.
FORM	FOILS, SHIM SHEET, ROLLS, PERFORATED SHEET, CHEQUERED PLATE.
FINISH	2B, 2D, HR,CR, BA NO(8), SATIN (MET WITH PLASTIC COATED)
HOT ROLLED PLATE (HR) COLD ROLLED SHEET (CR) VALUE ADDED SERVICES	<ul style="list-style-type: none"> • CUTTING • BENDING • FORGING • ROLLING • HEAT TREATMENT • MINOR FABRICATION

Stainless Steel & Duplex Plates And Sheets

We specialize in offering stainless steel plates and duplex steel plates and sheets as our range imparts durability and strength. Available in different dimensions, these plates and sheets can be customized to suit the specific requirement of the clients.

Stainless Steel Plate And Sheets

ASTM / ASME SA 240 GR. TP 304 , 304L , 304H, 309S , 309H , 310S, 310H , 316 , 316L, 316H , 316Ti, 317L, 321, 321H, 347, 347 H, 409, 410S, 420, 430, 904L.

Duplex Steel Butt Weld Fittings

Grade	UNS NO.S 31803, S 32205
-------	-------------------------

Carbon Steel & Alloy Steel Plates And Sheets

Our range of carbon steel plates, carbon steel sheets, alloy steel plates and sheets are perfect fusion of modern technology and superior steel. Made of high tensile carbon, alloy and as per the specified standards, we offer these plates and sheets in different grades.

Carbon Steel Plate

Standard	ASTM / ASME A 36 / IS 2062, EN 8, C 45, SAIL HARD
----------	---

Alloy Steel Plates and Sheets

Standard	ASTM / ASME A/SA 387
Grade	F 11, F 12, F 22, F 91.

Boiler Plate

Grade	SA 516 Grade 70
-------	-----------------

HCHCR

Grade	D2, D3
-------	--------

Nickel Alloy & Non Ferrous Plates

We offer a comprehensive range of nickel alloy plates, nickel alloy sheets and non-ferrous plates, fabricated from finest quality of raw materials. These plates are impeccably designed to excellence to meet the requirement of various industries.

Carbon Steel Plate

Standard	ASTM / ASME SB 162 / 127 / 424 / 168 / 443 / 574 / 462
Grade	UNS 2200 (NICKEL 200) / UNS 2201 (NICKEL 201), UNS 4400 (MONEL 400), UNS 8825 (INCONEL 825), UNS 6600 (INCONEL 600) / UNS 6601 (INCONEL 601), UNS 6625 (INCONEL 625), UNS 10276 (HASTELLOY C 276), UNS 8020 (ALLOY 20)

Aluminum Plates And Sheets

Standard	HE 20 65032 6061, HE 30 64430
----------	-------------------------------

FLANGES



We Manufacture various forged and plate flanges in large dia with different grades. We produce using high quality of steel to make them last for many years.

We offer high quality and superior performance steel flanges for various requirements of our clients. Designed as per market standards and parameters. Our flanges are high in durability and can withstand extreme conditions. Our comprehensive range includes weld neck flanges, socket weld flanges, steel weld flanges, steel weld neck flanges and many more.

RANGE	½" (15 NB) TO 48" (1200NB) IN 150 LBS, 300 LBS, 600 LBS, 900 LBS, 1500 LBS, 2500 LBS ASA 150, ASA 300, PN
	6,10,16,25, 40,64,100,160 ETC. AVAILABLE WITH NACE MR 01-75
FORM	<ul style="list-style-type: none"> • SLIP ON – SORF • WELD NECK – WNRF • SOCKET WELD – SWRF • BLIND – BLRF • LAPPED JOINT • SCREWED • LONG WELD NECK • REDUCING • SPECTACLE • RING JOINT • DROWING
STANDARD	<ul style="list-style-type: none"> • ASTM • BS • DIN • IS
OTHER	<ul style="list-style-type: none"> • PLATE • PLATE BLANK
VALUE ADDED SERVICES	<ul style="list-style-type: none"> • HOT DIPPED GALVANIZING • HEAT TREATMENT • CNC MACHINING • THREADING

Stainless Steel & Duplex Steel Flanges

We offer wide variety of stainless steel flanges and duplex steel flanges as per the standard specifications. These steel flanges are highly durable, reliable, corrosion resistant and are available at highly competitive prices.

Stainless Steel Flanges

Standard	ASTM / ASME A/SA 182 & A240
Grade	F 304, 304L, 304H, 309S, 309H, 310S, 310H, 316, 316TI, 316H, 316L, 316LN, 317, 317L, 321, 321H, 347, 347H, 904L.

Duplex Steel Flanges

Standard	ASTM / ASME A/SA 182
Grade	F 44, F 45, F51, F 53, F 55, F 60, F 61

Carbon Steel & Alloy Steel Flanges

We supply wide range of carbon steel flanges and alloy steel flanges which are made as per the international quality and safety standards. Available in standard dimensions for being used in different industries, these flanges can be customized as per the specification of the client.

Carbon Steel Flanges

Standard	ASTM / ASME A/SA 105 / 350 LF 2 / A 516 GR.70 / IS 2062
----------	---

Alloy Steel Flanges

Standard	ASTM / ASME A/SA 182 / A 387
Grade	F5, F9, F11, F12, F22, F91.

Nickel Alloy & Copper Alloy Flanges

We offer premium quality of nickel alloy flanges & copper alloy flanges that are used in various industries like engineering, construction etc. Made with the sophisticated manufacturing facilities, we ensure the quality and durability of the flanges.

Nickel Alloy Flanges

Standard	ASTM / ASME SB 564 / 160 / 472
Grade	UNS 2200 (NICKEL 200), UNS 4400 (MONEL 400), UNS 8825 INCONEL (825), UNS 6600 (INCONEL 600), UNS 6601 (INCONEL 601), UNS 6625 (INCONEL 625), UNS 10276 (HASTELLOY C 276), UNS 2201 (NICKEL 201), (ALLOY 20 / 20 CB 3)

Copper Alloy Flanges

Standard	Standard HE 20 65032 6061, HE 30 64430
Grade	UNS NO. C 92200, UNS NO. C 83600, UNS NO. 70600, 71500, C 70600 (CU -NI- 90/10), C 71500 (CU -NI- 70/30), UNS NO C 10100, C 10200, C 10300, C 10800, C 12000, C 12200

FASTNERS



We are the leading Manufacturer and Exporter of almost all types of industrial fasteners. These industrial fasteners are made of high quality raw materials like stainless steel, alloy steel, nickel alloys and non ferrous materials. These steel and metal fasteners have excellent corrosion resistant, durability, reliability and precision. Widely used across several industries, our alloy and metal fasteners conform to the international quality standards such as DIN, ANSI, ASTM, BS, etc. We also extend custom production of fasteners in bulk according to the customers' samples or drawings.

RANGE	M10 TO M100, LENGTH UPTO 5 METERS
FORM	BOLTS STUD BOLTS, HEX HEAD BOLTS, SOCKET HEXAGON HEAD SCREW ANCHOR BOLTS, U-BOLTS, J BOLTS, MUSHROOM HEAD SQUARE NECK BOLTS, T- HEAD BOLTS, WING SCREW, EYE BOLT, EYE BOLT, FOUNDATION BOLTS, STRUCTURAL BOLTS.
	WASHER PLAIN WASHER, PLAIN BIG & SMALL OD WASHER, SPRING LOCK WASHER, SPRING WASHER HEAVY DUTY, TOOTH WASHER, STAR WASHER, TAB WASHER WITH ONE & TWO TAB.
	NUTS HEXAGON NUTS, HEXAGON COUPLING NUTS, HEXAGON THIN NUT, SQUARE NUT, HEXAGON CASTLE NUTS, SELF LOCKING NUT, HEXAGON DOMED CAP NUTS.
	SCREW PAN HEAD SLOTTED SCREWS , CHEESE HEAD SLOTTED SCREWS, COUNTERSUNK HEAD SLOTTED SCREWS, COUNTERSUNK RAISED HEAD SLOTTED SCREWS, I PAN PHILLIPSE HEAD SCREW, COUNTERSUNK PHILLIPSE RAISED HEAD SCREWS, SLOTTED CHEESE TRIM HEAD MACHINE SCREWS, SOCKET HEAD ALLEN CAP SCREWS, ALLEN COUNTERSUNK SOCKET HEAD CAP SCREWS, SOCKET HEAD SHOULDER SCREWS, SOCKET HEAD CAP SCREW LOW

HEAD, HEXAGON SOCKET SET SCREW WITH FLAT POINT, HEXAGON SOCKET SET SCREWS WITH CONE POINT, HEXAGON SOCKET SET SCREW WITH DOG POINT, HEXAGON SOCKET SET SCREWS WITH DOG POINT, HEXAGON SOCKET SET SCREWS WITH CUP POINT, IMPRIAL SOCKET CAP SCREWS.

OTHER
THREADED ROD, AS PER DRAWING AND CUSTOMERS SPEC.

COATING

- HOT DIPPED GALVANIZING
- PHOSPHATE
- TEFLON
- XYLON
- ZINC
- CADMIUM

Stainless Steel Fasteners

Presenting a comprehensive range of fasteners like bolts, nuts, washers made from premium quality of steel. Our range of fasteners like stainless steel hex head bolts, stainless steel hexagon nuts are widely used in various industries like construction, engineering etc. because of its high tensile strength.

Stainless Steel

Standard	ASTM / ASME A/SA 193 / 194
Grade	B 8 (304), B 8C (SS 347), B 8M (SS 316), B 8 T (SS 321), A 2, A 4

Duplex Steel

UNS NO.S 31803, S 32205

Nickel Alloy Fasteners

We supply nickel fasteners in different dimensions, made with premium quality of raw materials and as per the specified standards. These fasteners pursuits operational excellence and possess high tensile strength.

Carbon Steel Flanges

Standard	ASTM / ASME SB 160 / 164 / 425 / 166 / 446 / 574 / 472
Standard	UNS 2200 (NICKEL 200) / UNS 2201 (NICKEL 201), UNS 4400 (MONEL 400), UNS 8825 (INCONEL 825), UNS 6600 (INCONEL 600) / UNS 6601 (INCONEL 601), UNS 6625 (INCONEL 625), UNS 10276 (HASTELLOY C 276), UNS 8020 (ALLOY 20 / 20 CB 3)

High Tensile Fasteners

Supplying and exporting a wide range of abrasion resistant and corrosion resistant fasteners. These precision engineered fasteners are extremely durable, reliable and are widely used in different industries.

Stainless Steel

Standard	ASTM / ASME A/SA 193 / 194
Grade	B 8 (304), B 8C (SS 347), B 8M (SS 316), B 8 T (SS 321), A 2, A 4

Duplex Steel

UNS NO.S 31803, S 32205

Nickel Alloy Fasteners

We supply nickel fasteners in different dimensions, made with premium quality of raw materials and as per the specified standards. These fasteners pursuits operational excellence and possess high tensile strength.

Alloy Steel Fasteners

Standard	ASTM / ASME A/SA 193 / 194 GR.
Grade	B 6, B 7/ B 7M, B 16, 2, 2HM, 2H, GR 6, B 7, B 7M



CLIENTS



أرامكو السعودية
saudi aramco

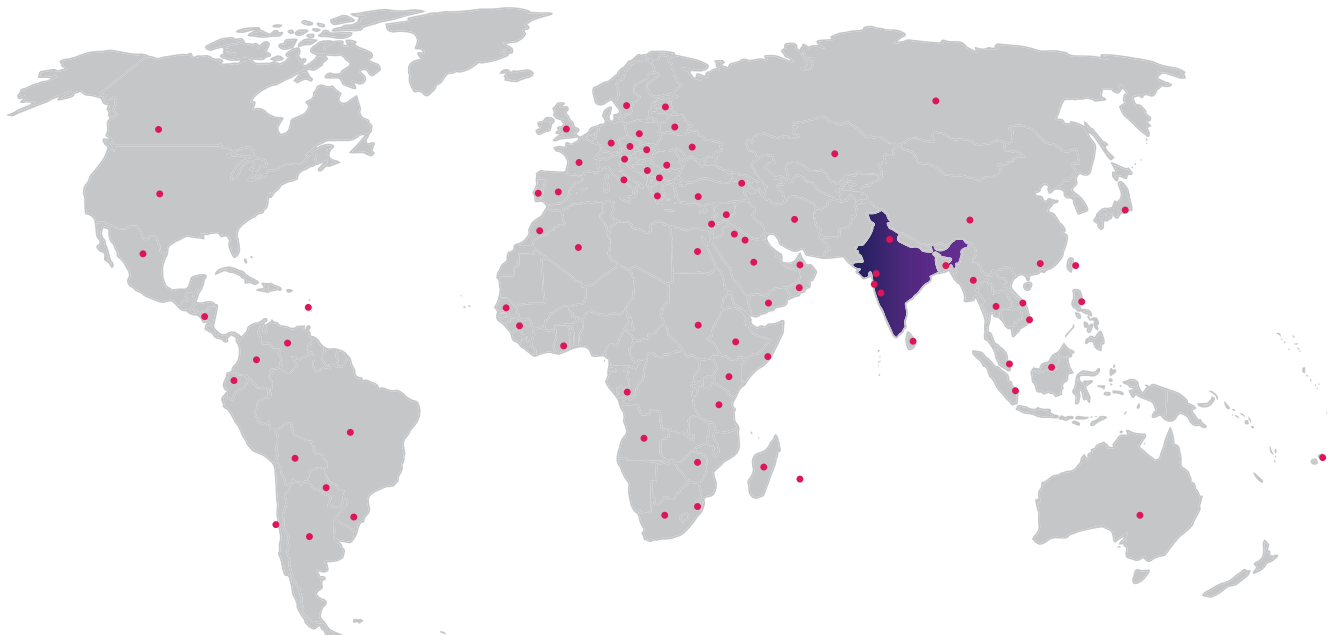


Mexichem.

سابك
sabik



COUNTRY OF EXPORTS



Canada
USA
Mexico
Panama
West Indies
Venezuela
columbia
ecuador
Brazil
Bolivia
Paraguay
Chile
Argentina
uruguay
South Africa
switzerland
Madagascar
Mauritius
tanzania
Angola

Republic of Congo
Ghana
Republic of guinea
Senegal
morocco
Portugal
Spain
France
England
Germany
Sweden
Poland
Italy
austria
Czech Republic
slovakia
Poland
Romania
Turkey
Latvia

Belarus
Ukraine
Syria
Armenia
Israel
Egypt
Jordon
Kuwait
Saudi Arebia
UAE
Yeman
Oman
Yemen
Somalia
Ethophia
Sudan
Kenya
Tanzania
Iran
Kazakistan

Russia
China
Shri Lanka
Burma
Dehradhun
Surat
Daman
Mumbai
Bangladesh
Hong Kong
Thailand
Vietnam
Taiwan
Philippiens
Camboida
Singapore
Indonesia
malaysia
Australia
Fhiji

MIDLAND ALLOYS INC.

24/1, 2nd Carpenter Street,
Mumbai – 400 004, Maharashtra, India.

+91-22-23818369

+91-22-23810301

+91-22-23810302

info@midlandalloys.com

